



Bolt is a powerful and easy to use live event production suite for entertaining your sports audience. It can easily broadcast live video feeds, still graphics, and motion graphics.

Using Bolts initiative interface, you can run a series of promotional advertisements that provide your facility with a steady stream of revenue generating opportunities. While Bolt shines for entertaining the live audience during the game, it can also be used to produce timely messages or run sponsor ads all day long.

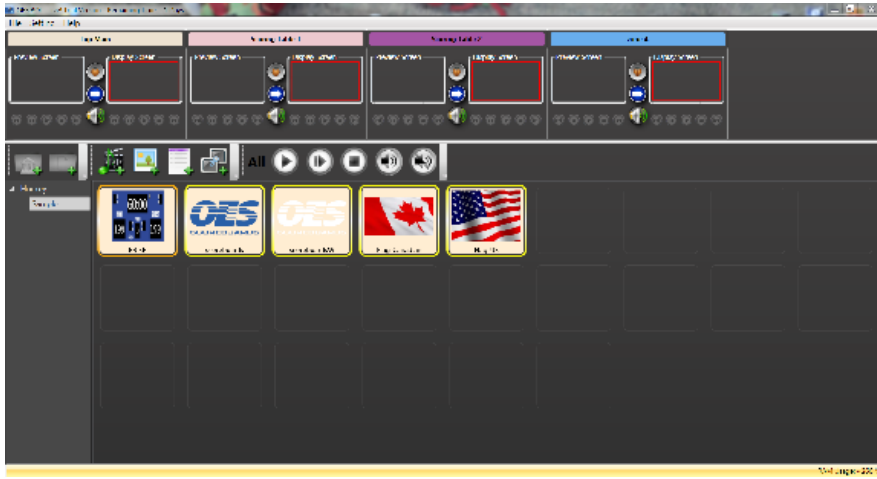
Bolt connects directly with your OES controller and can display a wide range of real time scoring and stats information to enhance the game day experience.



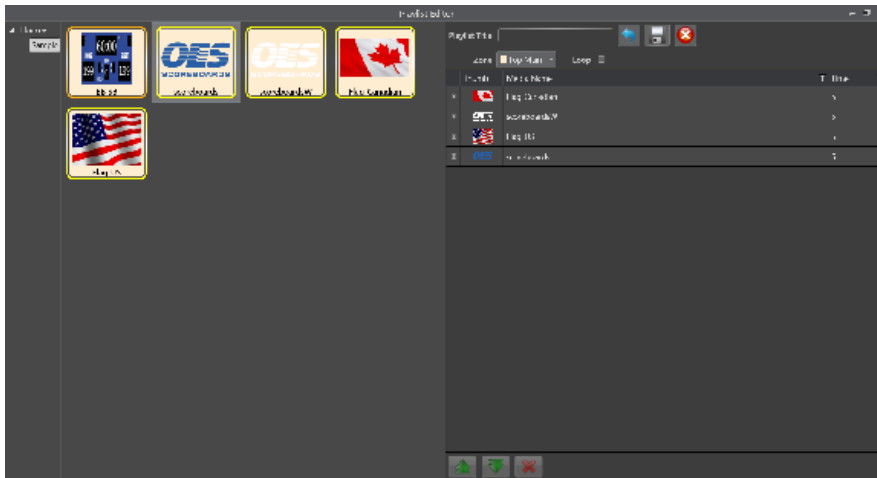
## FEATURES

- Easy to use initiative interface
- Create custom graphics and edit content
- Quickly overlay graphics to any part of your display
- Fully customizable virtual scoreboard editor
- One click to trigger multiple content files simultaneously
- Easy hot key triggering
- Content playlists available
- Color coded thumbnails easily identifies media type and zones

MAIN SCREEN



PLAYLIST EDITOR



MULTI ZONE TRIGGER



# Bolt

Video Output	1 channel DVI Pixel-matched to specific screen size (no external scalar required)
Video Input (Bolt Live!)	1 (HD-SDI, SD-HDI, HDMI and analog)
Display zones	1 included with order, up to 6 total available
Image Formats	BMP, JPEG, PNG, TIFF, Windows Media Photo, GIF, ICON
Video Formats	RAW, RGBA, YV12, WMV, WMV2, WMV3, WMVA, WVC1, H264, H.263, MP4
Stats Interface	OES, FinishLynx, Stat Crew
System	4U rack mountable computer LCD Monitor (Touchscreen available) Keyboard and mouse
Storage Capacity	1000GB (1TB)
Operating System	64 Bit, Windows
Additional items	RS232, Ethernet, Wi-Fi

\*Standalone software version available.